

Soluz Monitoring

Data Acquisition and Analysis

The Need for Field Data

Accurately collecting and analyzing field data from renewable energy systems helps determine actual equipment performance, end-user patterns and improve project decision making.

Soluz offers six DAS components that allow you to put together a monitoring program to meet your specific needs while providing only the components required, helping keep your project within budget.

- 1. Expert DAS Program Design**
- 2. Professional On-Site DAS Setup**
- 3. Soluz DAS1 Units**
- 4. DAS Data Monitoring (on-site or remote)**
- 5. DAS Data Technical Analysis**
- 6. DAS Data Market Analysis**

1. Expert DAS Program Design

Soluz's experts design a data acquisition program based on your specific needs. Soluz offers two types of performance monitoring:

1.) Focus on individual components: Batteries, charge controllers, PV modules, wind turbines, load performance, (refrigerators, PV water pumps), load usage profile and customer characterization (lights, radio, TV, computers, etc).

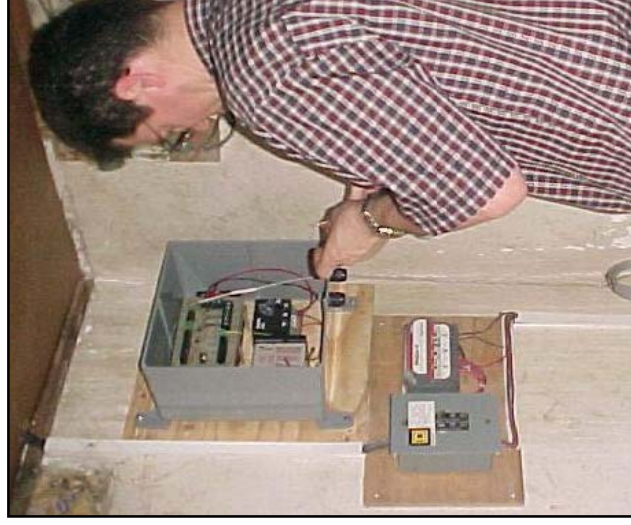
2.) Monitoring of complete systems: PV systems, large stand-alone systems, wind systems, hybrid systems (diesel, wind, PV), battery-charging stations, grid-tied systems, water-pumping systems, outdoor lighting systems.

2. Professional On-Site DAS Setup

Soluz consultants can help perform site selection, design the necessary equipment configuration, and install all the necessary monitoring equipment. Soluz's quality DAS setup will ensure continuous, reliable up-time, and ultimately a successful monitoring project.

3. Robust & Compact DAS Hardware

Soluz provides all necessary hardware—Soluz DAS1 Unit, PV power source, and remote tele-monitoring equipment—as required.



Soluz's exclusive **Soluz DAS1** is configured to meet the monitoring needs of project, even in the harshest or most remote locations.

4. DAS Data Monitoring

Soluz offers both local monitoring and remote tele-monitoring capabilities. Remote tele-monitoring offers the advantages of access to real-time data, and removes the need for on-site technicians and computer equipment to collect the data. Monitoring for extended periods based on your requirements allows trend tracking over time, which is critical to evaluating system performance and ensuring project success.

5. DAS Data Technical Analysis

Data collected is only as good as the analysis done. Using proprietary analysis tools, Soluz can help you determine system deficiencies, points of failure, overall system health, usage patterns, trends over time, and other critical analyses. Raw data can be exported and provided to you for further off-line analysis in conventional spreadsheets.

6. DAS Data Business Analysis

By combining technical and customer behavior data, Soluz's technology and market experts can determine project viability, and help you determine the keys to long-term project sustainability.

A Flexible Solution to Ensure Project Success

Soluz DAS units have been successfully deployed in multiple PV and wind monitoring projects around the world.

Let Soluz help your project succeed.



Soluz, Inc.

55 Middlesex Street, No. 221 • N. Chelmsford, MA 01863 • USA
tel: 978-251-5290 • fax: 978-251-5291 • email: info@SoluzUSA.com
web: www.SoluzUSA.com